

OCTAVE® ULTRASONIC METER



Technical Specifications:

Working Pressure - 175 PSI

Liquid Temperature - 32° - 122 °F

Metrological Characteristics - Meets ANSI/AWWA Standard C750-10, ISO 4064 rev. 2005

Configuration - Compact-Display built into unit

Power Source - 2 x D Size Lithium Thionyl Chloride batteries - 10 year warranted life time

Environmental Protection - NEMA 6P+ (IP68+), Ambient operation temp. -13 °F/ +131 °F for the display

Display Units - Multi line 9 digit LCD (Programmable USG, Cubic Feet, Cubic Meters, Acre Feet for volume and GPM, L/Us, or M³/h for rate of flow)

Output - Programmable single/dual open drain digital pulse, dry contact digital pulse, encoder OR externally powered loop 4-20 mA

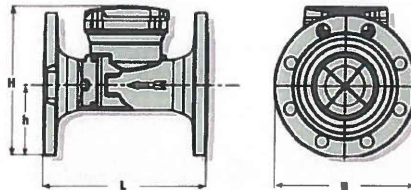
Performance Data

Octave Nominal Size (inch/mm)	1" Transit Section Flow (GPM/LPS)	Minimum Flow Rate (95% Accuracy) (GPM/LPS)	Normal Flow Range (95.4% - 104.6% Accuracy) (GPM/LPS)	2" Or Greater Size Max Flow (GPM/LPS)	Accuracy Range ± 0.5% Max. Error (Typical) (GPM/LPS)
2" (50 mm)	1/18 (0.06)	1/4 (0.18)	1/2 - 250 (0.32 - 15.77)	250 (15.77)	4 - 200 (25 - 12.62)
3" (80 mm)	1/18 (0.04)	1/2 (0.32)	1 - 500 (0.6 - 31.54)	500 (31.54)	5 - 350 (32 - 22.08)
4" (100 mm)	1/18 (0.04)	3/4 (0.47)	1-1/2 - 1,000 (0.9 - 63.09)	1000 (63.09)	15 - 700 (94 - 44.16)
6" (150 mm)	3/4 (0.47)	2 (1.3)	3 - 1,500 (1.9 - 100.84)	1,500 (100.84)	20 - 1,150 (126 - 72.65)
8" (200 mm)	3/4 (0.47)	4 (2.5)	5 - 2,500 (3.2 - 176.89)	2,500 (176.89)	50 - 2,000 (315 - 128.18)
10" (250 mm)	2.5 (1.6)	8 (5.0)	14 - 5,500 (8.8 - 348.89)	5,500 (348.89)	400 - 4,000 (25.24 - 252.38)
12" (300 mm)	2.5 (1.6)	8 (5.0)	14 - 5,500 (8.8 - 348.89)	5,500 (348.89)	400 - 4,000 (25.24 - 252.38)

1 Starting flow only per meter but the 25 to 20 to 10 to 5 above listed flow rates
2 Continuous Rate Size Flow ranges listed for the Octave are for accurate flow measurement only and do not limit the Octave from measuring the Short-term Outage Flow for its services

Dimensions

Model	Octave							
Nominal Size	2" SS (50 mm)	2" DI (50 mm)	3" (80 mm)	4" (100 mm)	6" (150 mm)	8" (200 mm)	10" (250 mm)	12" (300 mm)
L - Length	10" (250 mm)	17" (432 mm)	12" (305 mm)	14" (356 mm)	18" (457 mm)	20" (508 mm)	17 3/4" (451 mm)	19 3/4" (502 mm)
B - Width	5 3/4" (148 mm)	5 3/4" (146 mm)	7 1/2" (190 mm)	8" (229 mm)	11" (280 mm)	13 1/2" (343 mm)	18" (468 mm)	19 3/4" (502 mm)
H - Height	8 3/4" (172 mm)	8 3/4" (172 mm)	8 1/2" (216 mm)	9 7/8" (250 mm)	10 7/8" (278 mm)	12 7/8" (327 mm)	16 1/2" (416 mm)	18 3/4" (502 mm)
h - Height	2 1/8" (54 mm)	2 1/8" (54 mm)	3 1/2" (90 mm)	4 1/2" (115 mm)	5 1/8" (130 mm)	6 3/8" (162 mm)	8" (203 mm)	9 7/8" (251 mm)
Weight - Ductile Iron	N/A	24 lbs. (11 kg)	36 lbs. (16 kg)	46.5 lbs. (22 kg)	78 lbs. (34 kg)	108 lbs. (49 kg)	150 lbs. (68 kg)	210 lbs. (95 kg)
Weight - Stainless Steel	15 lbs. (7 kg)	N/A	28 lbs. (13 kg)	40 lbs. (18 kg)	82 lbs. (38 kg)	88 lbs. (40 kg)	N/A	N/A



3450 W. 131st. Street
Carmel, IN 46074

Phone: 317-733-2855
Fax: 317-733-2053

CARMEL WATER
STANDARD DETAILS

TITLE:
OCTAVE ULTRASONIC
METER

Date: January 2023

Scale: No Scale

Drawn By: Crossroad Engineers

Drawing Name: CW-19