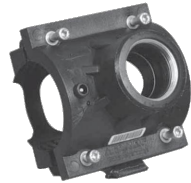


SADDLES

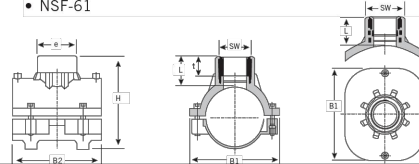
VA Electrofusion Service Saddles



Field of Application Installation of service and branch pipes
 Range of Application Gas up to 100 psi
 Water up to 200 psi
 Friatec Molded Saddle Fittings may be clamped onto pipes up to SDR 11 and sealed using electrofusion.

Benefits include:

- Universal compatibility with various diameters of polyethylene pipe from 3" up to 22" IPS
- Quick, easy and safe assembly
- NSF-61



Nominal Pipe d1 (in)	Main Size d2	Nominal Outlet	Product Code	B1	B2	H	L	t	e
3"	IPS	2" SSPT	228262	6.102	5.906	7.835	3.740	1.063	3.189
4"	IPS	2" SSPT	228170	6.890	7.087	8.228	3.740	1.063	3.189
4"	DIP	2" SSPT	228298	6.890	7.087	8.228	3.740	1.063	3.189
6"	IPS	2" SSPT	228171	8.858	7.677	10.197	3.740	1.063	3.189
6"	DIP	2" SSPT	228302	8.858	7.677	10.197	3.740	1.063	3.189
8" - TL*	IPS	2" SSPT	228218	9.843	7.677	11.693	3.740	1.063	3.189
8" - TL*	DIP	2" SSPT	228173	10.039	7.677	12.283	3.740	1.063	3.189
10" - 22" TL*	IPS	2" SSPT	228174	7.874	-	-	3.543	-	-
10" - 20" TL*	DIP	2" SSPT	228174	7.874	-	-	3.543	-	-

* FRIATEC Pneumatic Top-loading tool required

FRIATEC Safety fittings can be fused to all PE pipes SDR range 11 through 17.6.
 Assemble nipple, bushing or corporation stop into saddle using red LOCTITE #262
 (SSPT) = Straight Standard Pipe Thread. The use of tapered fittings for the outlet is not permitted

BRASS FITTINGS ONLY ON SSSPT REDUCER BUSHINGS.

REDUCER TO BE IRON PIPE TO CC ON 3/4" TO 1 1/2" SERVICE LINES.

2" SERVICE IS TO BE IRON PIPE BY IRON PIPE.

SSPT Reducer Bushings



Description	Product Code
2" x 3/4" Male SSPT x Female NPT	228453
2" x 1" Male SSPT x Female NPT	228454
2" x 1 1/2" Male SSPT x Female NPT	228455



3450 W. 131st. Street
 Carmel, IN 46074

Phone: 317-733-2855
 Fax: 317-733-2053

CITY OF CARMEL
 STANDARD DETAILS

TITLE:
 ELECTRO FUSION
 SERVICE SADDLE

Date: January 2023

Scale: No Scale

Drawn By: Crossroad Engineers

Drawing Name: CW-28